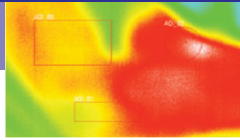
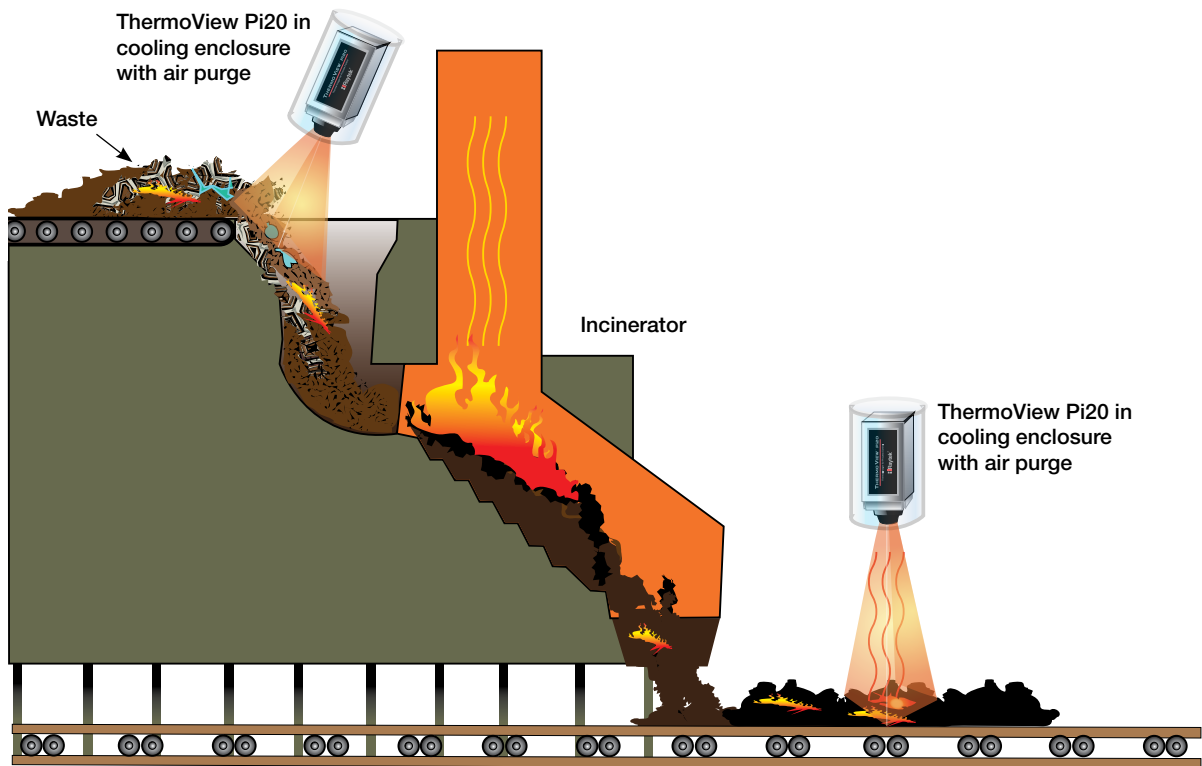


# ThermoView® Pi20

Incinerator Fire Detection



## Thermal Imaging for Industrial Applications

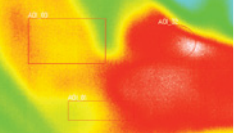


### Our Solution

- Raytek® ThermoView Pi20 High Performance Thermal Imager with protective enclosure/air purge and DataTemp® DTPi Software

### Benefits

- Prevention of major fires caused by undetected burning garbage in the incinerator entry
- Improved boiler efficiency in combustion process through detection of wet garbage
- Eliminated damage to conveyor belts caused by undetected hot clumps of fly ash
- Labor savings with fixed, automated thermal imaging
- Paperless recording and data storage



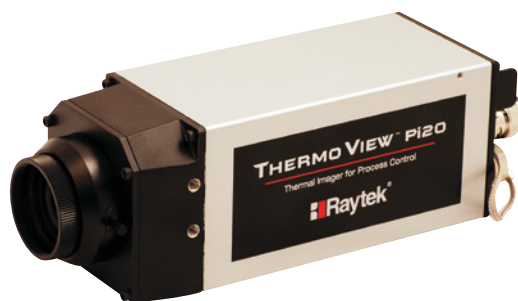
In many countries, including the U.S., disposal of garbage is becoming a major concern. There is less room for landfill, so another option in this case is to burn the refuse in an incinerator. There are two methods for burning garbage. The first is to use a long rotary kiln and insert the garbage into the kiln, where gas flames can burn the waste. This is often used for chemical and medical waste that requires a very high temperature to insure complete combustion. This application utilizes a linescanner to detect failures in the refractory lining of the kiln.

For normal household and industrial waste, the best method is to actually burn the waste material in a boiler and use the heat generated to create steam for other heating needs. There are some small villages in Europe that use this heat from the boiler to heat entire villages. First, the garbage is brought into a storage area. Often the garbage is stored in large bunkers and because of internal heat or hot objects in the garbage, the refuse pile can actually catch on fire. Entire warehouses have burned as a result of fires that resulted from these hotspots. A Raytek® ThermoView Pi20 thermal imager can be used to detect this overheating, so water can then be used to cool the garbage and prevent fires.

Before the garbage is fed into the boiler, it is often shredded into smaller pieces. Shredding helps generate a hotter fire and insures more complete combustion. During this process, the garbage can get overheated from the friction of the shredder or even sparks discharged during the shredding. A Pi20 thermal imager aimed at the entrance of the shredder can be used to indicate overheating and prevent a fire from occurring.

The garbage or biomass is then preheated before entering the boiler. This is done to increase burning efficiency and to dry the wet material. The average temperature is around 300°C (575°F). If it gets too hot, a fire is possible and if it's not hot enough, the burning will be very inefficient. A Pi20 thermal imager can measure the entire bed and provide an alarm for both overheating to prevent fires, as well as under heating to promote complete drying.

The garbage has now been burned and the remaining material is fly ash. The ash is released from the burner and tube areas of the boiler, as well as from the bag house. In any of these locations, there can be large lumps of ash that are hot and can burn the conveyor. The average temperature of the ash is around 75°C (165°F) and hotspots will be detected at 200°C (395°F) and hotter. The Raytek ThermoView Pi20 thermal imager can detect these hotspots and provide an alarm for the operator to eliminate the hot ash.



## Fluke Process Instruments

### Americas

Santa Cruz, CA USA

Tel: +1 800 227 8074 (USA and Canada, only)

+1 831 458 3900

[solutions@flukeprocessinstruments.com](mailto:solutions@flukeprocessinstruments.com)

### EMEA

Berlin, Germany

Tel: +49 30 4 78 00 80

[info@flukeprocessinstruments.de](mailto:info@flukeprocessinstruments.de)

### China

Beijing, China

Tel: +8610 6438 4691

[info@flukeprocessinstruments.cn](mailto:info@flukeprocessinstruments.cn)

### Japan

Tokyo, Japan

Tel: +81 03 6714 3114

[info@flukeprocessinstruments.jp](mailto:info@flukeprocessinstruments.jp)

### Asia East and South

India Tel: ++91 22 2920 7691

Singapore Tel: +65 6799 5578

[sales.asia@flukeprocessinstruments.com](mailto:sales.asia@flukeprocessinstruments.com)

### Worldwide Service

Fluke Process Instruments offers services, including repair and calibration.

For more information, contact your local office.

[www.flukeprocessinstruments.com](http://www.flukeprocessinstruments.com)

© 2016 Fluke Process Instruments

Specifications subject to change without notice.

12/2016 3782549A



Raytek is an ISO 9001 certified company